



● **FEATURES 特性**

1. Entire winding core is encapsulated in heat shriked ul tube or magnetically shielded. to provide mechanical and envirinmental protection.

UI 套管包装或磁屏蔽，以提高机械和电路抗干扰性能。

2. Rugged reliability and performance 优越的可耗性和电气特性。

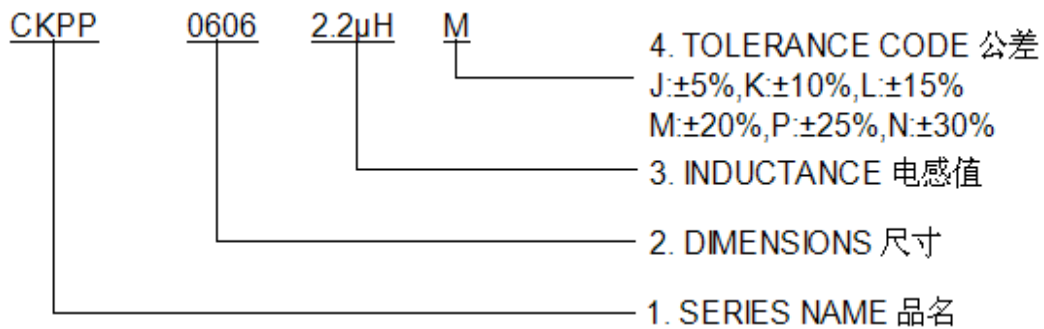
3. High current low impedance 大电流，小阻抗。

● **APPLICATIONS 用途**

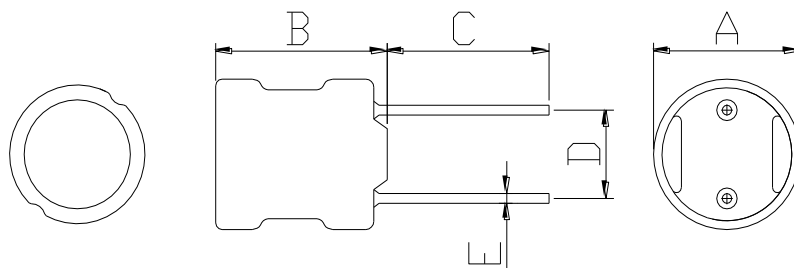
For switching power supply with high reliability, OA equipment choke.

用于开关电路，OA设备

● **PART NUMBERING SYSTEM 品名系统**



● **SHAPES AND DIMENSIONS 外形尺寸 (Unit:mm)**



TYPE(型号)	A	B	C	D	E
CKPP0605	7.5Max	6.5Max	15±2.0	4.0±0.5	0.6±0.05
CKPP0606	7.5Max	7.5Max	15±2.0	4.0±0.5	0.6±0.05
CKPP0805	9.5Max	7.0Max	15±2.0	5.0±0.5	0.6±0.05
CKPP0807	9.5Max	9.0Max	15±2.0	5.0±0.5	0.6±0.05
CKPP0809	9.5Max	12.0Max	15±2.0	5.0±0.5	0.6±0.05
CKPP1006	12.0Max	7.5Max	15±2.0	5.0±0.5	0.8±0.1
CKPP1008	12.0Max	10.0Max	15±2.0	5.0±0.5	0.8±0.1
CKPP1010	12.0Max	12.0Max	15±2.0	5.0±0.5	0.8±0.1
CKPP1014	12.0Max	16.0Max	15±2.0	5.0±0.5	0.8±0.1



● SPECIFICATION TABLE:

PART NUMBER 品名	INDUCTANCE ( $\mu$ H) 电感值	DCR (Max.) ( $\Omega$ ) 直流电阻	Idc (Max.) (A) 额定电流	TEST FREQUENCY 测试频率
CKPP0605-220K	22	0.18	0.90	1KHz,0.25V
CKPP0605-270K	27	0.21	0.81	1KHz,0.25V
CKPP0605-330K	33	0.27	0.74	1KHz,0.25V
CKPP0605-390K	39	0.29	0.68	1KHz,0.25V
CKPP0605-470K	47	0.34	0.62	1KHz,0.25V
CKPP0605-560K	56	0.42	0.57	1KHz,0.25V
CKPP0605-680K	68	0.48	0.51	1KHz,0.25V
CKPP0605-820K	82	0.55	0.47	1KHz,0.25V
CKPP0605-101K	100	0.68	0.42	1KHz,0.25V
CKPP0605-121K	120	0.77	0.39	1KHz,0.25V
CKPP0605-151K	150	0.95	0.35	1KHz,0.25V
CKPP0605-181K	180	1.50	0.32	1KHz,0.25V
CKPP0605-221K	220	1.30	0.29	1KHz,0.25V
CKPP0605-271K	270	1.55	0.26	1KHz,0.25V
CKPP0605-331K	330	2.18	0.23	1KHz,0.25V
CKPP0605-391K	390	2.47	0.21	1KHz,0.25V
CKPP0605-471K	470	2.92	0.20	1KHz,0.25V
CKPP0605-561K	560	3.97	0.18	1KHz,0.25V
CKPP0605-681K	680	4.57	0.16	1KHz,0.25V
CKPP0605-821K	820	5.28	0.15	1KHz,0.25V
CKPP0605-102K	1000	7.06	0.13	1KHz,0.25V



● SPECIFICATION TABLE:

PART NUMBER 品名	INDUCTANCE ( $\mu$ H) 电感值	DCR (Max.) ( $\Omega$ ) 直流电阻	Idc (Max.) (A) 额定电流	TEST FREQUENCY 测试频率
CKPP0606-220K	22	0.13	0.96	1KHz,0.25V
CKPP0606-270K	27	0.18	0.87	1KHz,0.25V
CKPP0606-330K	33	0.21	0.78	1KHz,0.25V
CKPP0606-390K	39	0.26	0.72	1KHz,0.25V
CKPP0606-470K	47	0.29	0.66	1KHz,0.25V
CKPP0606-560K	56	0.33	0.60	1KHz,0.25V
CKPP0606-680K	68	0.36	0.55	1KHz,0.25V
CKPP0606-820K	82	0.39	0.50	1KHz,0.25V
CKPP0606-101K	100	0.54	0.45	1KHz,0.25V
CKPP0606-121K	120	0.62	0.41	1KHz,0.25V
CKPP0606-151K	150	0.72	0.37	1KHz,0.25V
CKPP0606-181K	180	0.88	0.34	1KHz,0.25V
CKPP0606-221K	220	0.99	0.30	1KHz,0.25V
CKPP0606-271K	270	1.52	0.27	1KHz,0.25V
CKPP0606-331K	330	1.69	0.25	1KHz,0.25V
CKPP0606-391K	390	1.85	0.23	1KHz,0.25V
CKPP0606-471K	470	2.85	0.21	1KHz,0.25V
CKPP0606-561K	560	3.21	0.19	1KHz,0.25V
CKPP0606-681K	680	3.60	0.17	1KHz,0.25V
CKPP0606-821K	820	4.87	0.16	1KHz,0.25V
CKPP0606-102K	1000	5.56	0.14	1KHz,0.25V

● SPECIFICATION TABLE:

PART NUMBER 品名	INDUCTANCE ( $\mu$ H) 电感值	DCR (Max.) ( $\Omega$ ) 直流电阻	Idc (Max.) (A) 额定电流	TEST FREQUENCY 测试频率
CKPP0805-100K	10	0.07	2.50	1KHz,0.25V
CKPP0805-120K	12	0.08	2.40	1KHz,0.25V
CKPP0805-150K	15	0.09	2.10	1KHz,0.25V
CKPP0805-180K	18	0.10	2.00	1KHz,0.25V
CKPP0805-220K	22	0.12	1.70	1KHz,0.25V
CKPP0805-270K	27	0.14	1.50	1KHz,0.25V
CKPP0805-330K	33	0.17	1.40	1KHz,0.25V
CKPP0805-390K	39	0.21	1.30	1KHz,0.25V
CKPP0805-470K	47	0.24	1.20	1KHz,0.25V
CKPP0805-560K	56	0.31	1.10	1KHz,0.25V
CKPP0805-680K	68	0.34	1.00	1KHz,0.25V
CKPP0805-820K	82	0.40	0.93	1KHz,0.25V
CKPP0805-101K	100	0.52	0.83	1KHz,0.25V
CKPP0805-121K	120	0.59	0.76	1KHz,0.25V
CKPP0805-151K	150	0.71	0.67	1KHz,0.25V
CKPP0805-181K	180	0.89	0.62	1KHz,0.25V
CKPP0805-221K	220	1.04	0.54	1KHz,0.25V
CKPP0805-271K	270	1.28	0.49	1KHz,0.25V
CKPP0805-331K	330	1.47	0.44	1KHz,0.25V
CKPP0805-391K	390	1.67	0.41	1KHz,0.25V
CKPP0805-471K	470	1.95	0.38	1KHz,0.25V
CKPP0805-561K	560	2.83	0.35	1KHz,0.25V
CKPP0805-681K	680	3.25	0.32	1KHz,0.25V
CKPP0805-821K	820	3.82	0.31	1KHz,0.25V
CKPP0805-102K	1000	5.28	0.25	1KHz,0.25V
CKPP0805-122K	1200	6.03	0.23	1KHz,0.25V
CKPP0805-152K	1500	7.15	0.21	1KHz,0.25V
CKPP0805-182K	1800	8.26	0.10	1KHz,0.25V
CKPP0805-222K	2200	11.1	0.18	1KHz,0.25V
CKPP0805-272K	2700	13.1	0.16	1KHz,0.25V
CKPP0805-332K	3300	15.9	0.14	1KHz,0.25V
CKPP0805-392K	3900	18.0	0.13	1KHz,0.25V
CKPP0805-472K	4700	23.9	0.12	1KHz,0.25V
CKPP0805-562K	5600	26.8	0.11	1KHz,0.25V
CKPP0805-682K	6800	31.7	0.098	1KHz,0.25V
CKPP0805-822K	8200	47.5	0.088	1KHz,0.25V
CKPP0805-103K	1000	55.7	0.080	1KHz,0.25V



● SPECIFICATION TABLE:

PART NUMBER 品名	INDUCTANCE ( $\mu$ H) 电感值	DCR (Max.) ( $\Omega$ ) 直流电阻	Idc (Max.) (A) 额定电流	TEST FREQUENCY 测试频率
CKPP0807-220K	22	0.08	1.60	1KHz,0.25V
CKPP0807-270K	27	0.10	1.40	1KHz,0.25V
CKPP0807-330K	33	0.14	1.30	1KHz,0.25V
CKPP0807-390K	39	0.15	1.20	1KHz,0.25V
CKPP0807-470K	47	0.17	1.10	1KHz,0.25V
CKPP0807-560K	56	0.19	0.99	1KHz,0.25V
CKPP0807-680K	68	0.21	0.89	1KHz,0.25V
CKPP0807-820K	82	0.27	0.81	1KHz,0.25V
CKPP0807-101K	100	0.32	0.74	1KHz,0.25V
CKPP0807-121K	120	0.36	0.67	1KHz,0.25V
CKPP0807-151K	150	0.51	0.60	1KHz,0.25V
CKPP0807-181K	180	0.57	0.55	1KHz,0.25V
CKPP0807-221K	220	0.76	0.50	1KHz,0.25V
CKPP0807-271K	270	0.86	0.45	1KHz,0.25V
CKPP0807-331K	330	0.90	0.41	1KHz,0.25V
CKPP0807-391K	390	1.28	0.37	1KHz,0.25V
CKPP0807-471K	470	1.44	0.34	1KHz,0.25V
CKPP0807-561K	560	1.61	0.31	1KHz,0.25V
CKPP0807-681K	680	2.07	0.28	1KHz,0.25V
CKPP0807-821K	820	2.33	0.26	1KHz,0.25V
CKPP0807-102K	1000	2.72	0.23	1KHz,0.25V
CKPP0807-122K	1200	3.98	0.21	1KHz,0.25V
CKPP0807-152K	1500	4.50	0.19	1KHz,0.25V
CKPP0807-182K	1800	6.81	0.17	1KHz,0.25V
CKPP0807-222K	2200	7.56	0.16	1KHz,0.25V
CKPP0807-272K	2700	8.54	0.14	1KHz,0.25V
CKPP0807-332K	3300	9.74	0.13	1KHz,0.25V
CKPP0807-392K	3900	12.90	0.12	1KHz,0.25V
CKPP0807-472K	4700	14.70	0.11	1KHz,0.25V
CKPP0807-562K	5600	20.40	0.10	1KHz,0.25V
CKPP0807-682K	6800	23.00	0.09	1KHz,0.25V
CKPP0807-822K	8200	30.60	0.08	1KHz,0.25V
CKPP0807-103K	1000	35.00	0.07	1KHz,0.25V

● SPECIFICATION TABLE:

PART NUMBER 品名	INDUCTANCE ( $\mu$ H) 电感值	DCR (Max.) ( $\Omega$ ) 直流电阻	Idc (Max.) (A) 额定电流	TEST FREQUENCY 测试频率
CKPP0809-100K	10	0.04	2.70	1KHz,0.25V
CKPP0809-120K	12	0.045	2.60	1KHz,0.25V
CKPP0809-150K	15	0.050	2.10	1KHz,0.25V
CKPP0809-180K	18	0.055	2.00	1KHz,0.25V
CKPP0809-220K	22	0.06	1.70	1KHz,0.25V
CKPP0809-270K	27	0.06	1.60	1KHz,0.25V
CKPP0809-330K	33	0.07	1.40	1KHz,0.25V
CKPP0809-390K	39	0.08	1.40	1KHz,0.25V
CKPP0809-470K	47	0.10	1.30	1KHz,0.25V
CKPP0809-560K	56	0.11	1.20	1KHz,0.25V
CKPP0809-680K	68	0.14	1.10	1KHz,0.25V
CKPP0809-820K	82	0.16	1.00	1KHz,0.25V
CKPP0809-101K	100	0.19	0.90	1KHz,0.25V
CKPP0809-121K	120	0.22	0.82	1KHz,0.25V
CKPP0809-151K	150	0.27	0.74	1KHz,0.25V
CKPP0809-181K	180	0.31	0.71	1KHz,0.25V
CKPP0809-221K	220	0.38	0.64	1KHz,0.25V
CKPP0809-271K	270	0.53	0.57	1KHz,0.25V
CKPP0809-331K	330	0.61	0.51	1KHz,0.25V
CKPP0809-391K	390	0.69	0.48	1KHz,0.25V
CKPP0809-471K	470	0.89	0.43	1KHz,0.25V
CKPP0809-561K	560	1.01	0.40	1KHz,0.25V
CKPP0809-681K	680	1.18	0.35	1KHz,0.25V
CKPP0809-821K	820	1.57	0.32	1KHz,0.25V
CKPP0809-102K	1000	1.84	0.30	1KHz,0.25V
CKPP0809-122K	1200	2.10	0.27	1KHz,0.25V
CKPP0809-152K	1500	2.80	0.23	1KHz,0.25V
CKPP0809-182K	1800	3.21	0.21	1KHz,0.25V
CKPP0809-222K	2200	4.21	0.19	1KHz,0.25V
CKPP0809-272K	2700	4.94	0.17	1KHz,0.25V
CKPP0809-332K	3300	6.16	0.15	1KHz,0.25V
CKPP0809-392K	3900	6.84	0.14	1KHz,0.25V
CKPP0809-472K	4700	7.89	0.13	1KHz,0.25V
CKPP0809-562K	5600	11.5	0.12	1KHz,0.25V
CKPP0809-682K	6800	13.2	0.11	1KHz,0.25V
CKPP0809-822K	8200	15.2	0.10	1KHz,0.25V
CKPP0809-103K	10000	22.0	0.09	1KHz,0.25V

● SPECIFICATION TABLE:

PART NUMBER 品名	INDUCTANCE ( $\mu$ H) 电感值	DCR (Max.) ( $\Omega$ ) 直流电阻	Idc (Max.) (A) 额定电流	TEST FREQUENCY 测试频率
CKPP1006-100K	10	0.040	2.60	1KHz,0.25V
CKPP1006-120K	12	0.044	2.30	1KHz,0.25V
CKPP1006-150K	15	0.058	2.00	1KHz,0.25V
CKPP1006-180K	18	0.064	1.90	1KHz,0.25V
CKPP1006-220K	22	0.088	1.80	1KHz,0.25V
CKPP1006-270K	27	0.100	1.50	1KHz,0.25V
CKPP1006-330K	33	0.110	1.40	1KHz,0.25V
CKPP1006-390K	39	0.140	1.20	1KHz,0.25V
CKPP1006-470K	47	0.160	1.10	1KHz,0.25V
CKPP1006-560K	56	0.190	1.00	1KHz,0.25V
CKPP1006-680K	68	0.220	0.90	1KHz,0.25V
CKPP1006-820K	82	0.290	0.80	1KHz,0.25V
CKPP1006-101K	100	0.320	0.80	1KHz,0.25V
CKPP1006-121K	120	0.380	0.70	1KHz,0.25V
CKPP1006-151K	150	0.500	0.65	1KHz,0.25V
CKPP1006-181K	180	0.560	0.60	1KHz,0.25V
CKPP1006-221K	220	0.780	0.55	1KHz,0.25V
CKPP1006-271K	270	0.920	0.50	1KHz,0.25V
CKPP1006-331K	330	1.10	0.45	1KHz,0.25V
CKPP1006-391K	390	1.30	0.40	1KHz,0.25V
CKPP1006-471K	470	1.50	0.38	1KHz,0.25V
CKPP1006-561K	560	1.90	0.35	1KHz,0.25V
CKPP1006-681K	680	2.20	0.32	1KHz,0.25V
CKPP1006-821K	820	2.60	0.30	1KHz,0.25V
CKPP1006-102K	1000	3.20	0.25	1KHz,0.25V

● SPECIFICATION TABLE:

PART NUKBER 品名	INDUCTANCE ( $\mu$ H) 电感值	DCR (Kax.) ( $\Omega$ ) 直流电阻	Idc (Kax.) (A) 额定电流	TEST FREQUENCY 测试频率
CKPP1008-100K	10	0.05	2.80	1KHz,0.25V
CKPP1008-120K	12	0.06	2.50	1KHz,0.25V
CKPP1008-150K	15	0.07	2.30	1KHz,0.25V
CKPP1008-180K	18	0.08	2.10	1KHz,0.25V
CKPP1008-220K	22	0.09	2.00	1KHz,0.25V
CKPP1008-270K	27	0.10	1.76	1KHz,0.25V
CKPP1008-330K	33	0.11	1.60	1KHz,0.25V
CKPP1008-390K	39	0.12	1.38	1KHz,0.25V
CKPP1008-470K	47	0.14	1.28	1KHz,0.25V
CKPP1008-560K	56	0.15	1.20	1KHz,0.25V
CKPP1008-680K	68	0.16	1.00	1KHz,0.25V
CKPP1008-820K	82	0.18	0.96	1KHz,0.25V
CKPP1008-101K	100	0.20	0.92	1KHz,0.25V
CKPP1008-121K	120	0.24	0.80	1KHz,0.25V
CKPP1008-151K	150	0.35	0.73	1KHz,0.25V
CKPP1008-181K	180	0.40	0.64	1KHz,0.25V
CKPP1008-221K	220	0.54	0.61	1KHz,0.25V
CKPP1008-271K	270	0.75	0.56	1KHz,0.25V
CKPP1008-331K	330	0.86	0.50	1KHz,0.25V
CKPP1008-391K	390	0.93	0.44	1KHz,0.25V
CKPP1008-471K	470	1.23	0.41	1KHz,0.25V
CKPP1008-561K	560	1.34	0.39	1KHz,0.25V
CKPP1008-681K	680	1.53	0.34	1KHz,0.25V
CKPP1008-821K	820	2.10	0.32	1KHz,0.25V
CKPP1008-102K	1000	2.30	0.28	1KHz,0.25V



● SPECIFICATION TABLE:

PART NUMBER 品名	INDUCTANCE ( $\mu$ H) 电感值	DCR (Max.) ( $\Omega$ ) 直流电阻	Idc (Max.) (A) 额定电流	TEST FREQUENCY 测试频率
CKPP1010-100K	10	0.023	3.50	1KHz,0.25V
CKPP1010-120K	12	0.024	3.24	1KHz,0.25V
CKPP1010-150K	15	0.036	2.88	1KHz,0.25V
CKPP1010-180K	18	0.039	2.61	1KHz,0.25V
CKPP1010-220K	22	0.042	2.34	1KHz,0.25V
CKPP1010-270K	27	0.045	2.16	1KHz,0.25V
CKPP1010-330K	33	0.057	1.89	1KHz,0.25V
CKPP1010-390K	39	0.076	1.80	1KHz,0.25V
CKPP1010-470K	47	0.10	1.62	1KHz,0.25V
CKPP1010-560K	56	0.11	1.44	1KHz,0.25V
CKPP1010-680K	68	0.15	1.35	1KHz,0.25V
CKPP1010-820K	82	0.16	1.26	1KHz,0.25V
CKPP1010-101K	100	0.19	1.08	1KHz,0.25V
CKPP1010-121K	120	0.21	0.99	1KHz,0.25V
CKPP1010-151K	150	0.23	0.90	1KHz,0.25V
CKPP1010-181K	180	0.26	0.82	1KHz,0.25V
CKPP1010-221K	220	0.29	0.74	1KHz,0.25V
CKPP1010-271K	270	0.36	0.67	1KHz,0.25V
CKPP1010-331K	330	0.51	0.61	1KHz,0.25V
CKPP1010-391K	390	0.69	0.55	1KHz,0.25V
CKPP1010-471K	470	0.98	0.51	1KHz,0.25V
CKPP1010-561K	560	1.10	0.46	1KHz,0.25V
CKPP1010-681K	680	1.20	0.42	1KHz,0.25V
CKPP1010-821K	820	1.30	0.38	1KHz,0.25V
CKPP1010-102K	1000	1.50	0.35	1KHz,0.25V

● SPECIFICATION TABLE:

PART NUMBER 品名	INDUCTANCE ( $\mu$ H) 电感值	DCR (Max.) ( $\Omega$ ) 直流电阻	Idc (Max.) (A) 额定电流	TEST FREQUENCY 测试频率
CKPP1014-6R8M	6.8	0.026	4.3	1KHz,0.25V
CKPP1014-8R2M	8.2	0.030	4.1	1KHz,0.25V
CKPP1014-100K	10	0.033	4.0	1KHz,0.25V
CKPP1014-120K	12	0.035	3.9	1KHz,0.25V
CKPP1014-150K	15	0.039	3.7	1KHz,0.25V
CKPP1014-180K	18	0.049	3.5	1KHz,0.25V
CKPP1014-220K	22	0.051	3.3	1KHz,0.25V
CKPP1014-270K	27	0.057	3.1	1KHz,0.25V
CKPP1014-330K	33	0.064	2.9	1KHz,0.25V
CKPP1014-390K	39	0.074	2.7	1KHz,0.25V
CKPP1014-470K	47	0.083	2.5	1KHz,0.25V
CKPP1014-560K	56	0.104	2.3	1KHz,0.25V
CKPP1014-680K	68	0.117	2.1	1KHz,0.25V
CKPP1014-820K	82	0.130	1.9	1KHz,0.25V
CKPP1014-101K	100	0.143	1.7	1KHz,0.25V
CKPP1014-121K	120	0.195	1.5	1KHz,0.25V
CKPP1014-151K	150	0.221	1.4	1KHz,0.25V
CKPP1014-181K	180	0.260	1.3	1KHz,0.25V
CKPP1014-221K	220	0.350	1.2	1KHz,0.25V
CKPP1014-271K	270	0.390	1.1	1KHz,0.25V
CKPP1014-331K	330	0.520	1.0	1KHz,0.25V
CKPP1014-391K	390	0.570	0.92	1KHz,0.25V
CKPP1014-471K	470	0.650	0.84	1KHz,0.25V
CKPP1014-561K	560	0.790	0.75	1KHz,0.25V
CKPP1014-681K	680	0.960	0.69	1KHz,0.25V
CKPP1014-821K	820	1.22	0.62	1KHz,0.25V
CKPP1014-102K	1000	1.60	0.52	1KHz,0.25V
CKPP1014-122K	1200	2.20	0.46	1KHz,0.25V
CKPP1014-152K	1500	2.50	0.41	1KHz,0.25V
CKPP1014-182K	1800	2.90	0.36	1KHz,0.25V
CKPP1014-222K	2200	3.20	0.32	1KHz,0.25V
CKPP1014-272K	2700	3.70	0.29	1KHz,0.25V
CKPP1014-332K	3300	5.00	0.27	1KHz,0.25V
CKPP1014-392K	3900	5.60	0.25	1KHz,0.25V
CKPP1014-472K	4700	7.40	0.23	1KHz,0.25V
CKPP1014-562K	5600	8.20	0.21	1KHz,0.25V
CKPP1014-682K	6800	11.9	0.19	1KHz,0.25V
CKPP1014-822K	8200	14.0	0.17	1KHz,0.25V
CKPP1014-103K	10000	16.0	0.16	1KHz,0.25V